

The Laramie Foothills Mule Deer Project

Research to Understand the Effect of Chronic Wasting Disease on Mule Deer Populations

Public Informational Meeting – May 10, 2010

Activities and Results to Date

- 140 deer captured, sampled, and collared (January and February 2010), 125 adult does and 15 fawns. No major injuries. One suspected capture related mortality.
- 4 deer out of the 125 adults (3.2%) have tested positive for CWD. We can be 95% confident that the current prevalence among females is < 12.6%. Inconclusive CWD tests being rerun.
- Genetic analyses are ongoing.
- Animals located 2-5 times per week using ground and aerial telemetry.
- 16 mortalities – 10 adults, 6 fawns
 - 7 adults, probable lion kill
 - 1 CWD, adult
 - 1 motor vehicle accident, adult
 - 1 adult unknown cause
 - 1 suspected capture-related fawn
 - 1 winter kill fawn
 - 4 fawns unknown, probable predation
 - Diagnostic samples on 7 of 10 adult mortalities
 - Diagnostic samples on 1 of 6 fawn mortalities
 - 4 negative, 1 positive, 3 pending (no conversions)



Figure 2. Age Structure of Deer

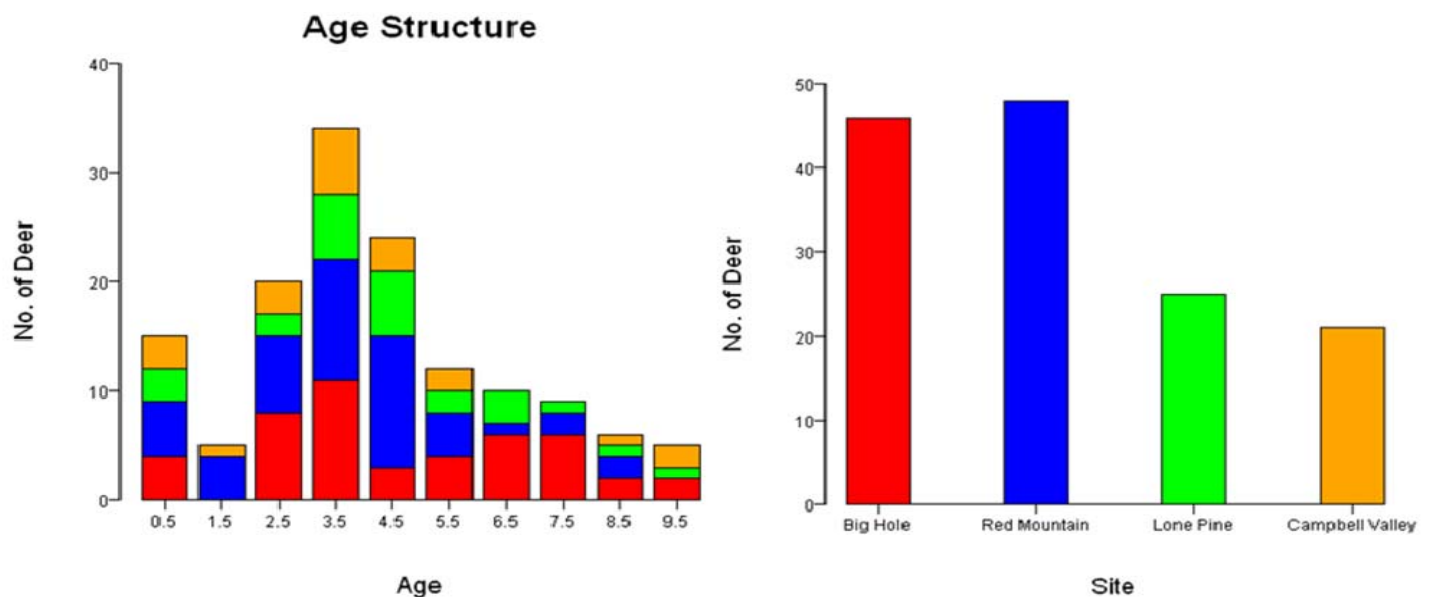


Figure 6. GPS Locations

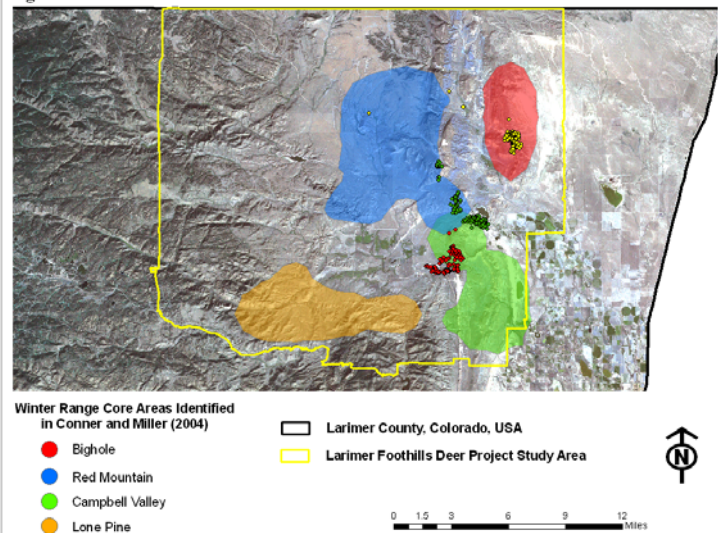
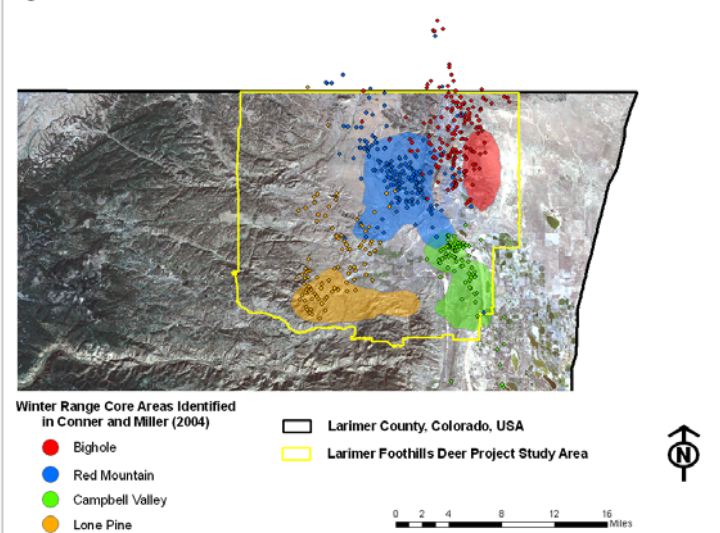


Figure 9. Distribution



Outreach

- 4 science teachers from Rocky Mountain High School will help with telemetry and field necropsies this summer.
- Interpretive signage developed for Soapstone Prairie Natural Area and Red Mountain Open Space.
- Training on CWD given to volunteer naturalists for Soapstone Prairie Natural Area and for Rocky Mountain National Park rangers.

Future Activities

- Jan/Feb 2011 – recapture collared deer for sampling and deploy 25-50 more collars
- We will likely be contacting some of you to request permission to enter your land if a deer is located there that we need to recapture. We value your help and appreciate your cooperation!
- Developing a web-based application for reporting sightings and locations of collared deer.

Citizen's Advisory Committee

- Daylan Figgs
- Nancy Howard
- Danette Meyer
- Kathay Rennels
- Travis Rollins
- Joel Vaad
- Edie Yates

For more information on the Laramie Foothills Mule Deer Project, please visit our website:
<http://www.nrel.colostate.edu/projects/modelingCWD/>